



2102 LYON AVENUE

Belmont



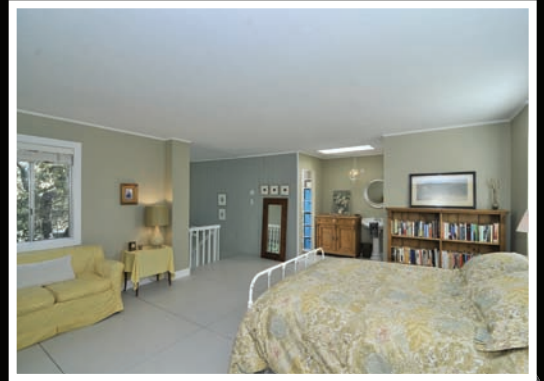
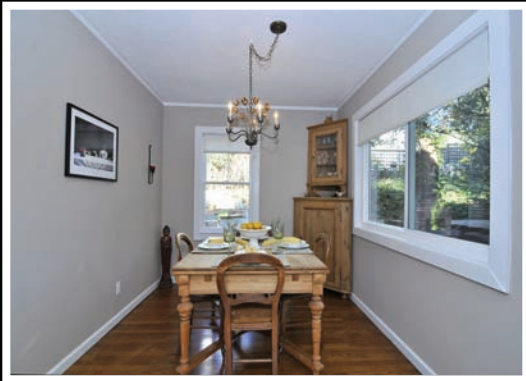
"Warm Cottage Living" meets "Sleek and Modern" in this Beautiful, Open and Light-Filled Home. The Main Level is on the second story and boasts Serenity as a "Wall of Windows" opens to the Romantic "English Garden" yard. Outstanding, Top Of The Line Chef's Kitchen completely remodeled in 2009 with top of the line stainless appliances, custom drawers and stellar craftsmanship. Welcoming living room and Dining Room with abundant Windows that allow Privacy and Soaring Sunlight, are Encompassed by Peaceful Private Views of the Surrounding Greenbelt of Mature Trees! Spacious Loft-Style Master Suite, Custom Walk-In Closet and Bath complete the Top Floor. Romantic Front Landscaping with Cobblestone + Brick Entry Welcomes You Home.

OFFERED AT \$759,500

www.2102LYON.com

Features of the Home:

- 2 Bedroom/2 Bath, 1400 Square feet, 5600+ sf lot
- Impeccably Crafted Top of The Line Chef's Kitchen!
- Open and Large Loft-Style Master Suite with Custom Walk-In Closet and Ample Space
- Second Bedroom features an Additional Alcove/ Office Space
- Lush and Tranquil Front Landscaping
- Rear Yard features Flat Usable Space, a Romantic Tiered Garden, and Several Decks perfect for Indoor/Outdoor Living.
- Beautiful Mature Oak Trees and Greenbelt Create a Private Escape
- 95% Energy Efficient Heating System with (rare) option for Air Conditioning in Belmont!
- Newer roof completely replaced in 2005
- Single Car Garage with Abundance of Storage & Workshop
- Centrally Located with easy access to all Amenities, Shops, and Freeways
- Wonderful, Family Friendly and Community Oriented Neighborhood, Great Belmont Schools!



OFFERED AT \$759,500

WWW.2102LYON.COM



ALAIN PINEL
REALTORS

520 S El Camino Real, Suite 100 | San Mateo, CA 94402
Information deemed reliable but not guaranteed.



COMMUNITY. FAMILY. SERVICE.

IRENE WEISMAN

BROKER ASSOCIATE

C 415.609.5338

O 650.931.2875

IRENE@IRENEWEISMAN.COM

DRE# 01861608

WWW.TEAMALEXANDIRENE.COM